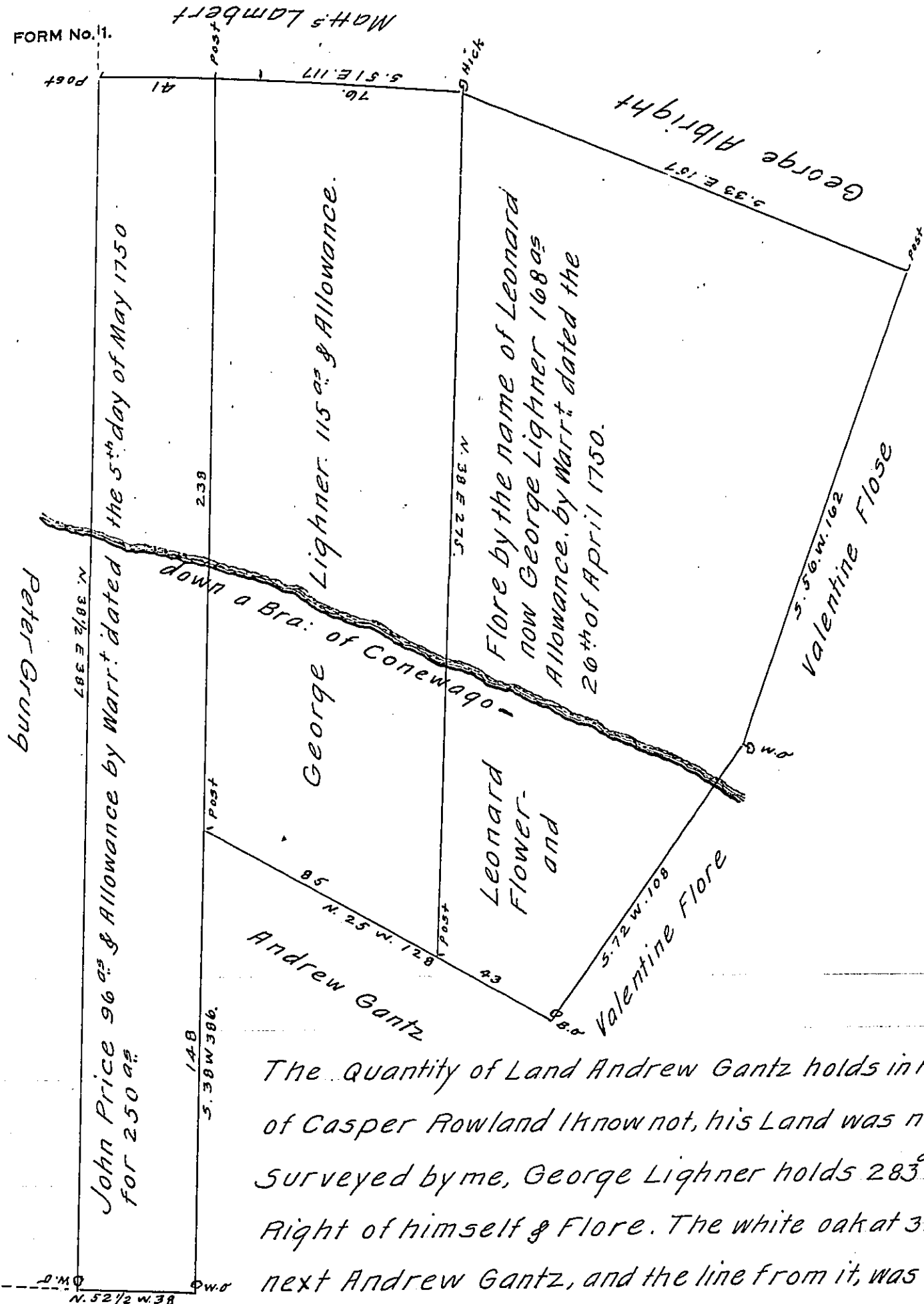


FORM No. 11.



The quantity of Land Andrew Gantz holds in Right of Casper Rowland I know not, his Land was not surveyed by me, George Lighner holds 283<sup>as</sup> in Right of himself & Flore. The white oak at 38<sup>Ps</sup> next Andrew Gantz, and the line from it, was made by George Smith; why he did not add the 96<sup>as</sup> to Peter Grungs Tract I know not. but his making the afs<sup>d</sup> Corner, and a line marked from it S. 38 W, was the reason I surveyed the 96<sup>as</sup> for John Price and not for George Lighner.

Tho<sup>s</sup> ARMOR. —

IN TESTIMONY that the above is a copy of the original remaining on file in the Department of Internal Affairs of Pennsylvania, made conformably to an Act of Assembly approved the 16th day of February, 1833, I have hereunto set my Hand and caused the Seal of said Department to be affixed at Harrisburg, this eighteenth day of July 1910.

*Henry Houck*  
 Secretary of Internal Affairs.

1770) The Revd Richd Peters says this Land was